

SNJ – Plummer Block Housing

NACHI SNJ plummer blocks are developed to be used with NACHI bearings which have the highest load carrying capacity in the world and therefore provide longer bearing life for many different industrial applications. NACHI SNJ plummer blocks can work with either a plain shaft with the bearing on an adapter sleeve or a stepped shaft with the bearing mounted directly without an adapter.

Available in a wide range of sizes:

- ▶ 200 Series | 300 Series | 500 Series | 600 Series

Materials:

- ▶ Standard material: cast iron GG25
- ▶ Other materials also available:
Steel – GS45
Ductile – GGG40

Shaft Diameter Range:

20 to 160mm

Bearing Types:

- ▶ Self-aligning ball bearings
- ▶ Spherical roller bearings for taper and cylindrical shafts



Locating Rings:

NACHI SNJ plummer blocks are constructed to support floating bearings. NACHI locating rings made of steel are used when a fixed bearing arrangement is required.*



End Cover:

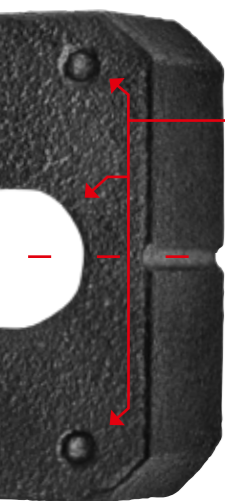
NACHI SNJ plummer blocks can be fitted with an end cover made of thermoplastic by inserting it into the housing seal groove.

Mounting:

NACHI SNJ plummer blocks are delivered with two mounting holes. However, drilling additional mounting holes is possible. Punch markings in the housing base point out the recommended positions.

Alignment During Assembly:

The alignment of NACHI SNJ plummer blocks is quick and precise. Markings on both end faces of the housing foot are provided. Both are aligned vertically to the axis of the bore in the housing.



Features of the Construction:

Extra load capacity with a strength-based design of the foot. The housing base is reinforced by an additional crosspiece on each side surrounding the mounting holes in the base which, together with the housing wall, increase the mounting surface.

Heat Dissipation:

The central support in the housing base increases the area of heat dissipation through the mounting surface. The reduced bearing working temperature increases the operating life of the machine.

Lubrication:

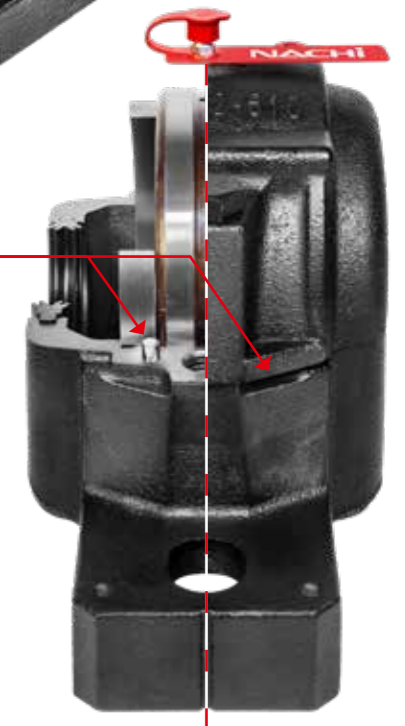
NACHI SNJ plummer blocks are designed for both grease and oil lubrication. However, grease lubrication is recommended.

NACHI SNJ plummer blocks are equipped with a relubrication device mounted on top of the housing together with a plastic protector. This nipple enables lubricant to enter the bearing directly via the outer ring through lubrication holes (NACHI designation W33). NACHI SNJ plummer block design also has an additional drilled and tapped hole in the upper section of the housing. The hole is protected by a plastic cup.

This hole is used if self-aligning ball bearings are mounted in the housing or for additional lubrication if required e.g. when an end cover or withdrawal sleeve is used.

Simple and Safe Assembly:

The upper and lower parts of the housing are not interchangeable. Dowel pins have been fitted in both halves to simplify the alignment and installation of heavy housings. Additionally, tool slots allow easy cap removal as well as faster bearing inspection and replacement.



* Two locating rings are required for a fixed position – sold one piece per box.

Seals Options:

Different seals types available to protect the bearing for various working environments and applications:

- ▶ Four-lip rubber seal
- ▶ V-ring
- ▶ Labyrinth seal
- ▶ Heavy-duty taconite seal



Adapter Sleeve Technical Information:

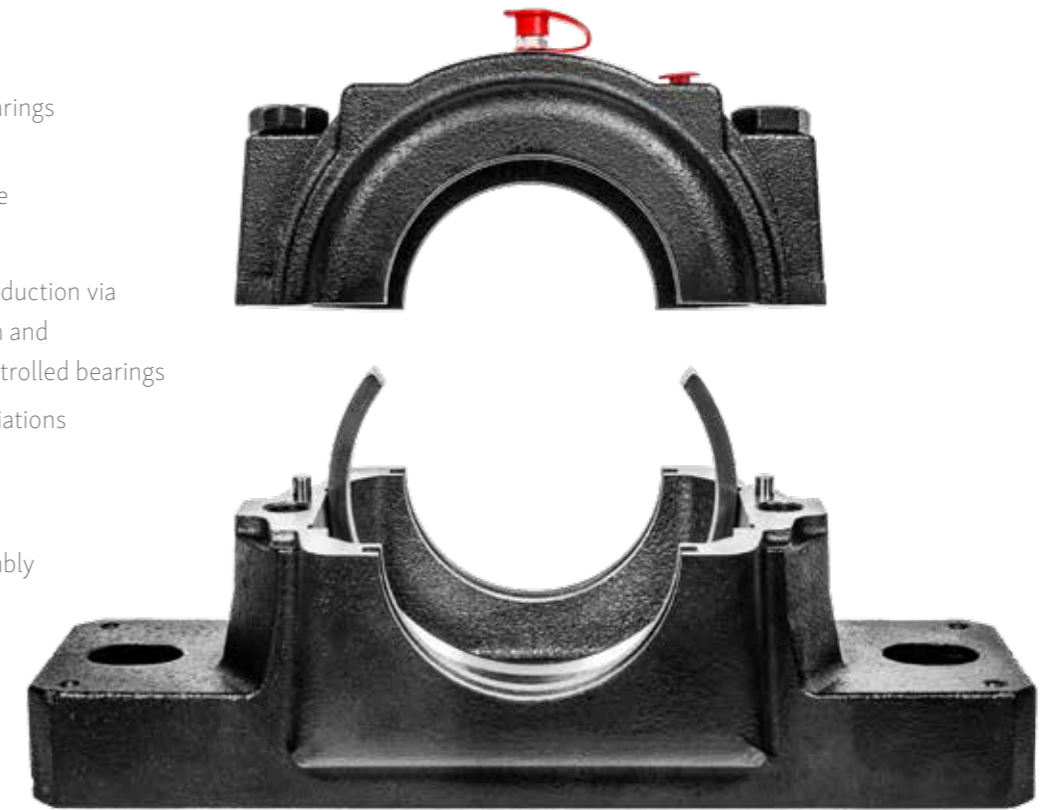
NACHI delivers adapter sleeves with a zinc phosphate coating for NACHI SNJ plummer blocks (standard version available on request).

- ▶ NACHI adapter sleeves provide high performance with a wide range of products due to high quality and surface accuracy.
- ▶ NACHI can also deliver adapter sleeves with a zinc phosphate coating.
- ▶ The coated version is resistant to corrosion. Sold by NACHI as standard together with NACHI SNJ plummer blocks.



Advantages:

- ▶ Applicable for various bearings
- ▶ Different bearing seat configurations permissible
- ▶ Reinforced construction
- ▶ Operating temperature reduction via increased heat dissipation and usage of NACHI skew controlled bearings
- ▶ Wide range of sealing variations
- ▶ Two relubrication points
- ▶ Simple maintenance
- ▶ Secure and precise assembly
- ▶ Increased service life



Configuration of Product Nomenclature:

Housing Style

SNJ S
 S: Steel
 D: Ductile Iron
 SNJ: Standard Type
 SD: Large type for heavy load

Housing Size

5 12 – 6 10
 Bore Code Housing Series
 2: 200 | 3: 300 | 5: 500 | 6: 600

Sleeve

H 3 10 J
 H: Adapter Sleeve
 OH: Hydraulic Sleeve
 J: Zinc Phosphate Coating
 -: No Coating
 Bore Code Sleeve Series

Locating Ring

LR 110 x 10.5
 Locating Ring (O.D. [mm] x Width [mm])

Seal

J 5 10
 Bore Code Housing Series
 2: 200 | 3: 300 | 5: 500 | 6: 600
 Seal Type
 J: Four-lip Rubber Seal*1*2
 JL: Labyrinth Seal*1
 JVR: V-Ring Seal*1
 JT: Taconite Seal*1

Cover

JE 5 11
 Bore Code Housing Series
 2: 200 | 3: 300 | 5: 500 | 6: 600
 End Cover

NACHI Spherical Roller Bearings

No. 1 IN THE WORLD

The highest load ratings in the world

- ▶ 100% made in Japan
- ▶ NACHI's quality is fully controlled and maintained – from steel production in NACHI's own steel plants to the final bearing assembly
- ▶ New internal geometry
- ▶ Significantly larger rollers
- ▶ More even load distribution on the contact surface between outer/inner rings and the rollers
- ▶ New ultra clean steel
- ▶ Higher speed limit
- ▶ Heat stabilised up to 200°C
- ▶ NACHI grease lubrication limiting speeds are comparable to oil lubrication limiting speeds of most competitors products.



*1 Two of each type of seals are required (one if end cover is used)
 *2 Four-lip seals are sold one piece per box (two halves)