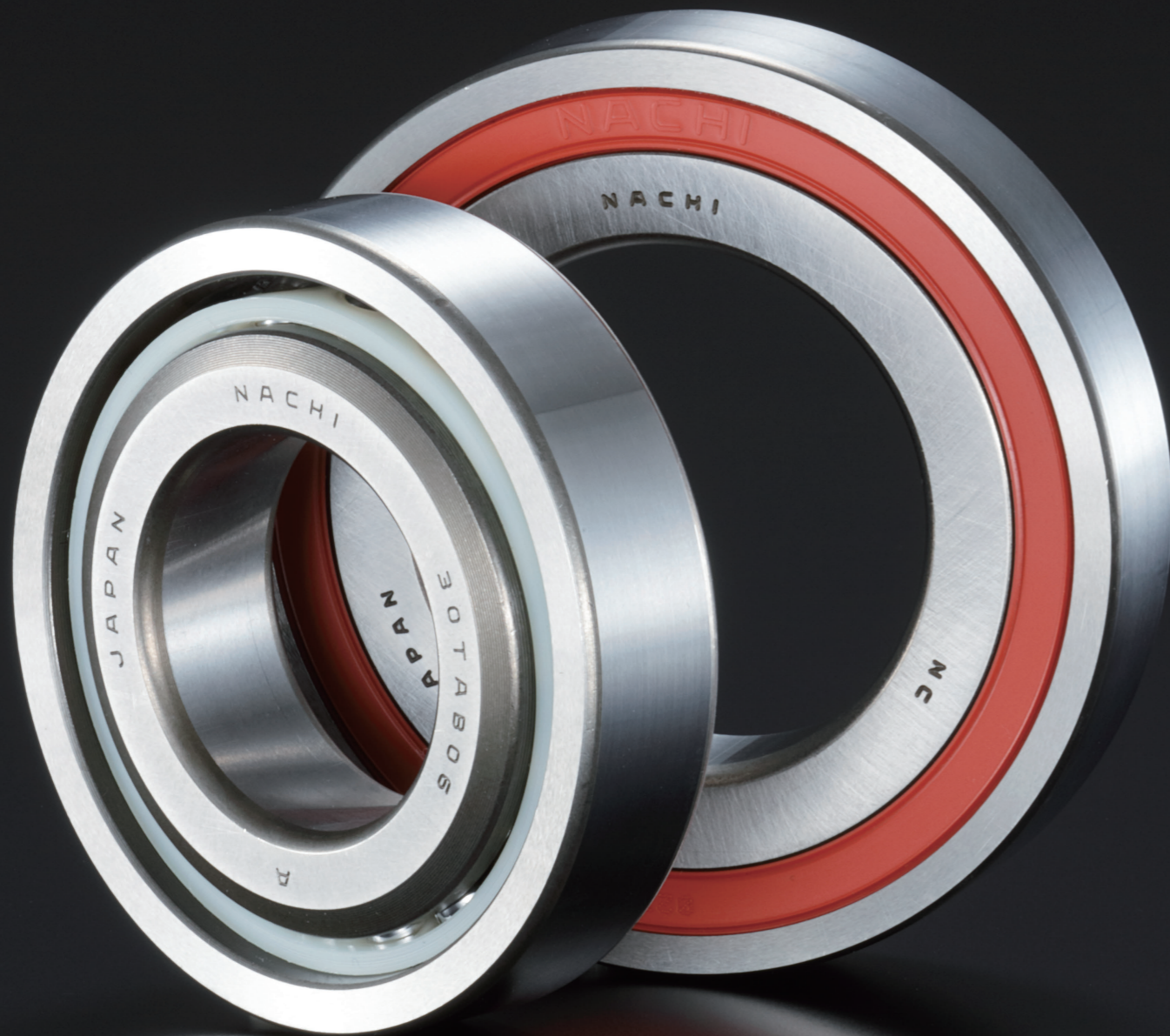
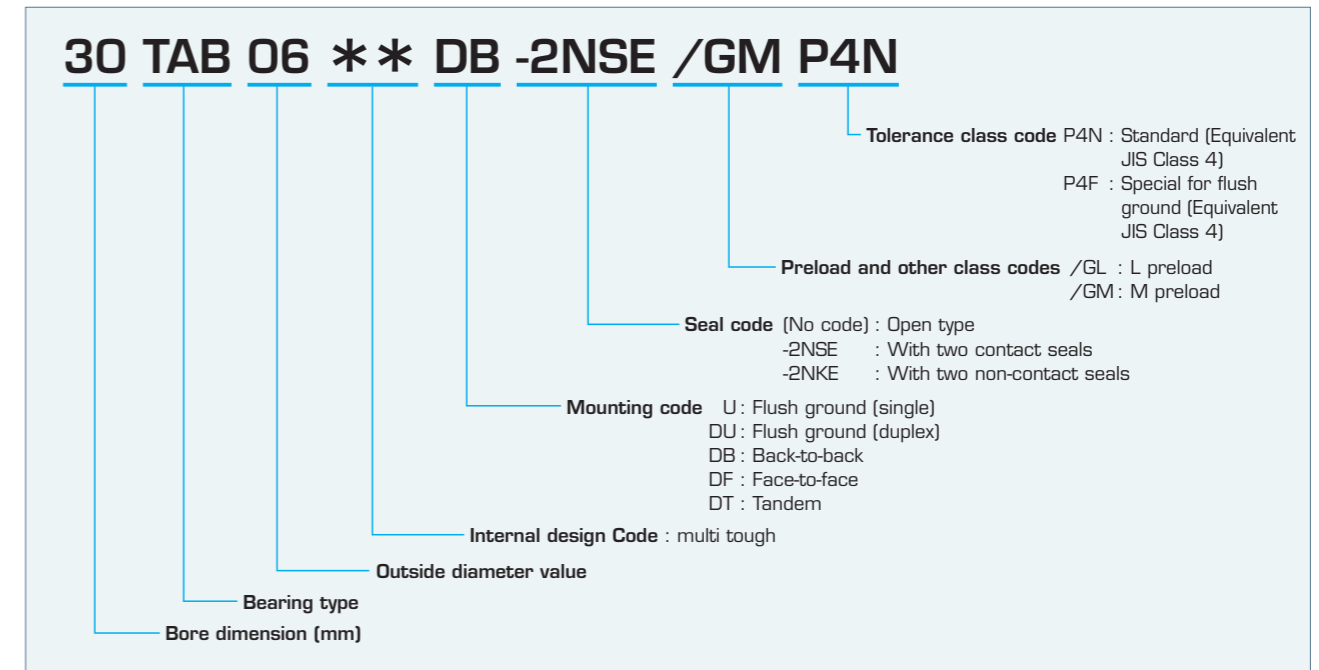


Ball Screw Support Bearings

TAB Series



Nomenclature of Bearing Numbers



- #### Features
- Resin cage and more balls than previous ball bearings for greater rigidity.
 - Combination bearings are provided with preset preloads, eliminating the need for troublesome installation adjustment using shims and torque measurements.
 - A contact angle of 60° and has the ability to handle radial and axial loads creates a compact bearing.
 - The seal type provides a choice between contact seal and non-contact seal to suit specific applications.

Contact Angle

The contact angle is 60°.

Cage

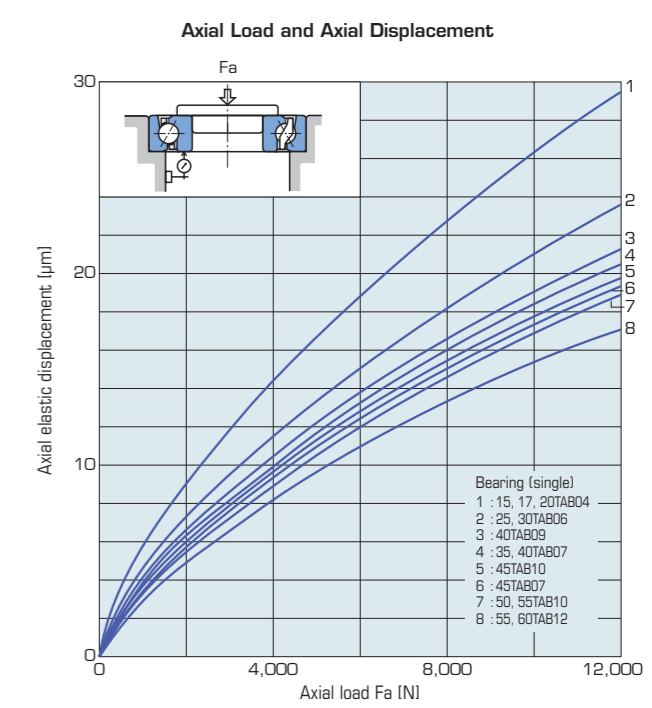
A ball guided polyamide resin cage is provided as standard.

Accuracy

P4N is standard. See Class 4 in page 13 for details. P4F can also be applied to TAB flash ground type.

Preload

Two types of preload settings are available. See page 23 for details.



Dimension Tables Types and Designs 7900/7000/7200 BNH TAH/TBH NN3000/NU4900 XRN/XRG TAB/TAU/TAF-X/XYS1/W1